

LECHUGUILLA

for flute and clarinet

by Stephen Lias

ALIAS PRESS

LECHUGUILLA

Guide to Notation

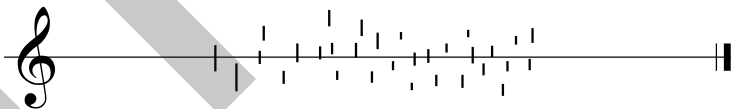
air through instrument
(wind sounds)



wind sounds stopped
or started with tongue



random key clicks



Prior to rehearsal letter D, accidentals apply only to single pitches.
In rehearsal letters D through end of G, normal accidentals are used.
From rehearsal letter H onward, accidentals apply only to single pitches.

LECHUGUILLA

Stephen Lias

Slowly and Freely

Fl. *ff* *mf* *p*

B♭ Cl. *ff* *p* *mf*

flz.

p *f* *p* *p* *f*

p *mf*

b₂ (bend)

tr.

mp

tr. & flz.

f

f (sim.)

mp

p *mf*

p *mp*

LECHUGUILLA

The first system consists of two staves. The upper staff begins with a treble clef and a key signature of one sharp (F#). It features a series of vertical lines, followed by a melodic phrase starting with a half note G4, marked *mf*. The lower staff starts with a treble clef and a key signature of one sharp. It contains a complex, wavy melodic line with a dynamic range from *p* to *f*. The system concludes with a double bar line, a fermata, and a dynamic marking of *p* transitioning to *f*.

A

Section A is marked with a box containing the letter 'A'. It consists of two staves. The upper staff begins with a treble clef and a key signature of one sharp. It starts with a whole note chord (F#4, A4, C5) marked *f*, followed by a melodic line with a fermata. The lower staff begins with a treble clef and a key signature of one sharp, featuring a series of vertical lines and a melodic line that ends with a fermata marked *mp*.

The second system consists of two staves. The upper staff starts with a treble clef and a key signature of one sharp, featuring a melodic line with a dynamic range from *p* to *f*. The lower staff begins with a treble clef and a key signature of one sharp, featuring a melodic line with a dynamic range from *f* to *mf*. The system concludes with a double bar line, a fermata, and a dynamic marking of *mf* transitioning to *ff*.

The third system consists of two staves. The upper staff begins with a treble clef and a key signature of one sharp, featuring a melodic line with a dynamic marking of *pp* and a triplet. The lower staff begins with a treble clef and a key signature of one sharp, featuring a melodic line with a dynamic marking of *pp* and a triplet. The system concludes with a double bar line, a fermata, and a dynamic marking of *ff*.

B

Section B is marked with a box containing the letter 'B'. It consists of two staves. The upper staff begins with a treble clef and a key signature of one sharp, featuring a melodic line with a dynamic marking of *f*. The lower staff begins with a treble clef and a key signature of one sharp, featuring a melodic line with a dynamic marking of *f*. The system concludes with a double bar line, a fermata, and a dynamic marking of *ff*.

LECHUGUILLA

Musical notation for the first system of 'LECHUGUILLA'. It consists of two staves. The upper staff begins with a dynamic marking of *mf*, which increases to *f* and then returns to *mf*. The lower staff also starts with *mf* and *f*, followed by a series of sixteenth notes. A large watermark 'SAMPLE' is visible across the page.

C A Little Faster

Musical notation for section C, 'A Little Faster'. It consists of two staves. The upper staff has dynamic markings of *f*, *mf*, and *f*. The lower staff has markings of *mf*, *p*, and *mf*. A triplet of eighth notes is marked with a '3'. A large watermark 'SAMPLE' is visible across the page.

Musical notation for the second system of section C. It consists of two staves. The upper staff has dynamic markings of *f* and *mf*. The lower staff has markings of *f*, *mf*, and *ff*. A triplet of eighth notes is marked with a '3'. A large watermark 'SAMPLE' is visible across the page.

Musical notation for the third system of section C. It consists of two staves. The upper staff has dynamic markings of *ff*, *p*, and *mf*. The lower staff has markings of *mp*, *mf*, and *mf*. Triplet markings of '3' and '7' are present. A large watermark 'SAMPLE' is visible across the page.

D In Tempo
♩ = c. 106

Musical notation for section D, 'In Tempo'. It consists of two staves. The upper staff has dynamic markings of *mp* and *f*. The lower staff has markings of *p*, *mp*, and *p*. A triplet of eighth notes is marked with a '3'. A large watermark 'SAMPLE' is visible across the page.