

Program Notes

Emily Dickinson, who studied astronomy, wrote this poem just a few years after Urbain-Jean-Le-Verrier (1811–1887), the well known astronomer, gained great respect for identifying the celestial coordinates for Neptune. This feat provided Dickinson with a lovely, albeit sad metaphor for her final stanza in this brief but poignant work.

—Dean M. Estabrook

Text

She went as quiet as the dew
From a familiar flower.
Not like the dew—did she return
At the accustomed hour!

She dropt as softly as a star
From out my summer's eve;
Less skillful than Leverrier
It's sorer to believe!

—Emily Dickinson (1830–1886)
“She went as quiet as the dew”
from *Time and Eternity*, Number 28
(c. 1859, first published in 1890 [P. D.]

Dean M. Estabrook (b. 1940)

For biographical information visit:
www.ecspublishing.com/composers

In loving memory of Cristina Cadena Estabrook
(May 29, 1950–May 21, 1976)

The Dew

for SSATBB Chorus unaccompanied

Emily Dickinson (1830–1886)
“She went as quiet as the dew”
from *Time and Eternity*, Number 28
(c. 1859, first published in 1890 [P. D.]
D. M. E., alt.

Dean M. Estabrook
(ASCAP)

Bittersweet ♩ = 50

p *mp*

Soprano 1
She went as quiet, as the

Soprano 2
She went as quiet, as the

Alto
She went as quiet, as the

Tenor
p She went, she went as quiet, as the *mp*

Bass 1
p She went, she went as quiet, as the *mp*

Bass 2
p She went, she went as quiet, as the *mp*

Bittersweet ♩ = 50

p *mp*

Keyboard
(for rehearsal only)

4

p *pp*

Dew From a *Fa - mil - iar flow - er, flow - er.
an Ac - cus - tomed

p *pp*

Dew From a *Fa - mil - iar flow - er, flow - er.
an Ac - cus - tomed

p *pp*

Dew From a *Fa - mil - iar flow - er, flow - er.
an Ac - cus - tomed

p *pp*

Dew From a *Fa - mil - iar flow - er, flow - er.
an Ac - cus - tomed

p *pp*

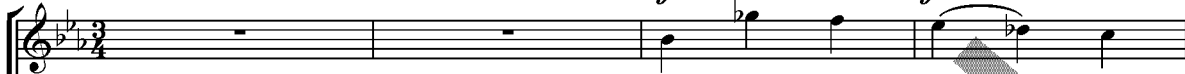
Dew From a *Fa - mil - iar flow - er, flow - er.
an Ac - cus - tomed

p *pp*

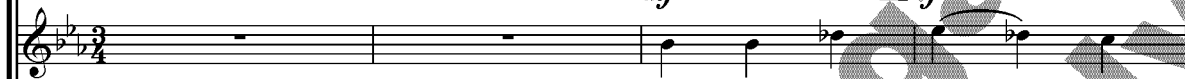
Dew From a *Fa - mil - iar flow - er, flow - er.
an Ac - cus - tomed

* The composer prefers the word "Familiar" here for how it sings.
The original word, "Accustomed," is offered as an alternative.

8 More animated ♩ = 84

mf *f*

Not like the Dew, did

mf *f*

Not like the Dew, did

mf *f*

Not like the Dew, did

mf *f*

Not like the Dew, did

mf *f*

Not like the Dew, the Dew, did

mf *f*

Not like the Dew, the Dew, the Dew, did

More animated ♩ = 84

mf *f*

12

rit. *p*

she re - turn At the Ac - cus - tomed hour! She

rit. *p*

she re - turn At the Ac - cus - tomed hour! She

rit. *p*

she re - turn At the Ac - cus - tomed hour! She

rit. *p*

she re - turn At the Ac - cus - tomed hour!

rit. *p*

she re - turn At the Ac - cus - tomed hour!

rit. *p*

she re - turn At the Ac - cus - tomed hour!

rit. *p*

Sadly ♩ = 50

16 *p*
dropt as soft - ly as a star, a

p
dropt as soft - ly as a star, a

p
dropt as soft - ly as a star, a

p
a

p
a

p
a

Sadly ♩ = 50
p

20 *f*

star From out my sum - mer's Eve— Less

star From out my sum - mer's Eve—

star From out my sum - mer's Eve—

star From out my sum - mer's Eve—

star From out my sum - mer's Eve—

star From out my sum - mer's Eve—

f

24 More animated ♩ = 84

mf
skill - ful, _____ less skill - ful, less

mf
less skill - ful, less

f *mf*
Less skill - ful, _____ less skill - ful, less

f *mf*
Less skill - ful, _____ less skill - ful,

f *mf*
Less skill - ful, less skill - ful,

f *mf*
Less skill - ful, less skill - ful,

More animated ♩ = 84 *mf*

30 *rit.* **Sadly** ♩ = 50 *p*

skill-ful, than Le - ver - rier It's

rit. *p*

skill-ful, than Le - ver - rier It's

rit. *p*

skill ful, than Le - ver - rier It's

rit. *p*

less skill-ful than Le - ver - rier It's sor - er,

rit. *p*

less skill-ful than Le - ver - rier It's sor - er,

rit. *p*

less skill-ful than Le - ver - rier It's sor - er,

rit. **Sadly** ♩ = 50 *p*

36

rit.

sor-er to be-lieve, it's sor-er, sor-er to be-lieve, be-lieve! _____

rit.

sor-er to be-lieve, it's sor-er, sor-er to be-lieve, be-lieve! _____

rit.

sor-er to be-lieve, it's sor-er, sor-er to be-lieve, be-lieve! _____

rit.

sor-er to be-lieve, it's sor-er, sor-er to be-lieve, be-lieve! _____

rit.

sor-er to be-lieve, it's sor-er, sor-er to be-lieve, be-lieve! _____

rit.

sor-er to be-lieve, it's sor-er, sor-er to be-lieve, be-lieve! _____

rit.