

# Всенощное бдение

## Vsenoshchnoye bdeniye

### All-Night Vigil

#### 4. Свете тихий

#### 4. Svete tikhii

#### 4. Gracious radiance

for Tenor Solo, SATB Chorus (divisi) unaccompanied

Anonymous 3rd-century Greek text  
All-Night Vigil  
Anthony Antolini, Tr.

киевского распева  
Based on Kievan chant  
Sergei Rachmaninoff (1873–1943)  
Op. 37, No. 4  
Anthony Antolini, Ed.

Довольно медленно (движение половинами)  
Rather slowly (pulse in half notes)

Soprano 1  
Soprano 2

Alto 1  
Alto 2

Tenor 1  
Tenor 2

Bass 1  
Bass 2

Keyboard  
(for rehearsal only)

*pp* Све - - - re \_\_\_\_\_  
Svʹé - - - tʹye \_\_\_\_\_  
Gra - - - cious \_\_\_\_\_

*pp* Све - - - re \_\_\_\_\_  
Svʹé - - - tʹye \_\_\_\_\_  
Gra - - - cious \_\_\_\_\_

Све - те ти - хий, свя - ты - я сла - вы \_\_\_\_\_ Без - смерт - на - го, \_\_\_\_\_  
Svʹé - tʹye tʹyí - khiy, svya - tʹi - ya slá - vī \_\_\_\_\_ Bʹyez - smʹért - na - go, \_\_\_\_\_  
*p* Gra - cious ra - diance, pure bright - ness of \_\_\_\_\_ the \_\_\_\_\_ Im - mor - tal, glo - rious \_\_\_\_\_

Довольно медленно (движение половинами)  
Rather slowly (pulse in half notes)

## Soprano 1

4

S 1  
S 2

*[pp]*

ти - хий, Свя - та - го, Бла - жен - на - го, — И - и - су - се Хри -  
 t'yi - khiy, Svyá - tá - go, Bla - zhén - na - go, — I - i - sú - s'ye Khri -  
 ra - diance, O ho - ly and bless - ed — Lord, O Thou Je - sus

A 1  
A 2

ти - хий, Свя - та - го, Бла - жен - на - го, — И - и - су - се Хри -  
 t'yi - khiy, Svyá - tá - go, Bla - zhén - na - go, — I - i - sú - s'ye Khri -  
 ra - diance, O ho - ly and bless - ed — Lord, O Thou Je - sus

От - ца Не - бес - на - го, Свя - та - го, Бла - жен - на - го, — И - и - су - се Хри -  
 Ot - sá N'ye - býés - na - go, Svyá - tá - go, Bla - zhén - na - go, — I - i - sú - s'ye Khri -  
 Fa - ther in heav - en, O ho - ly and bless - ed Lord, O Thou Je - sus

T 1  
T 2

8

S 1  
S 2

*mf*

сте! При - шед - ше на за - пад солн - ца, — ви - дев - ше свет — ве - чер -  
 st'yé! Pr'i - shéd - she na zá - pad sóln - tsa, — v'í - d'ev - she sv'et — v'ye - chér -  
 Christ! Now hav - ing come to sun - set, — we see the light — of eve -

A 1  
A 2

*mf*

сте! При - шед - ше на за - пад солн - ца, — ви - дев - ше свет — ве - чер -  
 st'yé! Pr'i - shéd - she na zá - pad sóln - tsa, — v'í - d'ev - she sv'et — v'ye - chér -  
 Christ! Now hav - ing come to sun - set, — we see the light — of eve -

сте!  
st'yé!  
Christ!

Tenors 1 & 2  
*mp*

Све - те ти - хий, све - те ти - хий,  
 Sv'yé - t'ye t'yi - khiy, sv'yé - t'ye t'yi - khiy,  
 Gra - cious ra - diance, gra - cious ra - diance,

B 1  
B 2

Bass 1 *mf*

Bass 2 (*mf*)

Све - те  
Sv'yé - t'ye  
Gra - cious

B 3

Bass 3 *p*

Све - те ти - хий,  
 Sv'yé - t'ye t'yi - khiy,  
 Gra - cious ra - diance,

*прежний темп*  
*a tempo*  
*очень певуче*  
*molto cantabile*

*немного задерживая*  
*rosso rit.*

*\* Tenor Solo p*

14

T Solo

S 1  
S 2

A 1  
A 2

T 1  
T 2

B 1  
B 2

B 3

По - ем \_\_\_\_\_ От - ца, \_\_\_\_\_  
Po - yém \_\_\_\_\_ Ot - sa, \_\_\_\_\_  
We sing \_\_\_\_\_ to Fa - ther,

ний. \_\_\_\_\_  
nyu. \_\_\_\_\_  
ning. \_\_\_\_\_

Све - те ти - хий. \_\_\_\_\_  
Svyé - tye tyi - khiy. \_\_\_\_\_  
Gra - cious ra - diance. \_\_\_\_\_

Све - те ти - хий. \_\_\_\_\_  
Svyé - tye tyi - khiy. \_\_\_\_\_  
Gra - cious ra - diance. \_\_\_\_\_

Све - те ти - хий. \_\_\_\_\_  
Svyé - tye tyi - khiy. \_\_\_\_\_  
Gra - cious ra - diance. \_\_\_\_\_

Све - те ти - хий. \_\_\_\_\_  
Svyé - tye tyi - khiy. \_\_\_\_\_  
Gra - cious ra - diance. \_\_\_\_\_

ти - хий. \_\_\_\_\_  
tyi - khiy. \_\_\_\_\_  
ra - diance. \_\_\_\_\_

Све - те ти - хий. \_\_\_\_\_  
Svyé - tye tyi - khiy. \_\_\_\_\_  
Gra - cious ra - diance. \_\_\_\_\_

све - те ти - хий. Све - те ти - хий.  
svyé - tye tyi - khiy. Svyé - tye tyi - khiy.  
gra - cious ra - diance. Gra - cious ra - diance.

*немного задерживая*  
*rosso rit.*

*прежний темп*  
*a tempo*

\* Может быть заменен первыми тенорами. —Примеч. С. В. Рахманинова.

\* May be sung by first tenors. —Note by S. V. Rachmaninoff.

21

T  
Solo

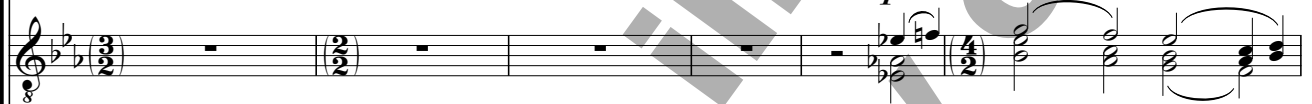
Сы - на и Свя - та - го Ду - ха, Бо - га.  
 Sī - na i Svyā - tā - go Dú - kha, Bó - ga.  
 to the Son and the Ho - ly Spir - it, one God.

S 1  
S 2

ти - хий свя - ты - я сла - вы. До - сто - ин  
 tŭi - khiy svya - tī - ya slá - ví. Do - stó - in  
 ra - diance pure ho - ly glo - ry. For - Thou art

A 1  
A 2

ти - хий свя - ты - я сла - вы. До - сто - ин е - си  
 tŭi - khiy svya - tī - ya slá - ví. Do - stó - in ye - syí  
 ra - diance pure ho - ly glo - ry. For - Thou art

T 1  
T 2

До - сто - ин  
 Do - stó - in  
 For - Thou art

До - сто - ин е - си  
 Do - stó - in ye - syí  
 For - Thou art

B 1  
B 2

До - сто - ин  
 Do - stó - in  
 For - Thou art



очень певуче  
molto cantabile

27

S 1  
S 2

e - си пет бы - ти гла - сы пре - по - доб - ны - ми -  
ye - syi p'yet bi - tyi glá - sí pr'ye-po - dób - ní - m'yi,  
wor - thy to be praised by hap - py voic - es, O

A 1  
A 2

во вся вре - ме - на пет бы - ти гла - сы пре - по - доб - ны - ми -  
vo fsya vr'ye-m'ye-ná p'yet bi - tyi glá - sí pr'ye-po - dób - ní - m'yi,  
wor - thy at all times to be praised by hap - py voic - es, O

T 1  
T 2

e - си пет бы - ти гла - сы пре - по - доб - ны - ми -  
ye - syi p'yet bi - tyi glá - sí pr'ye-po - dób - ní - m'yi,  
wor - thy to be praised by hap - py voic - es, O

во вся вре - ме - на пре - по - доб - ны - ми -  
vo fsya vr'ye-m'ye-ná pr'ye-po - dób - ní - m'yi,  
wor - thy at all times hap - py voic - es, O

B 1  
B 2

e - си пет бы - ти гла - сы пре - по - доб - ны - ми -  
ye - syi p'yet bi - tyi glá - sí pr'ye-po - dób - ní - m'yi,  
wor - thy to be praised by hap - py voic - es, O



35

*mf*

*f*

*mf*

*p rit.*

*pp*

задерживая

Musical staff for Soprano voice part, starting with a treble clef and a 4/2 time signature. The melody begins with a half note G4, followed by a quarter note A4, a dotted quarter note B4, and a half note C5. The dynamics range from mezzo-forte to pianissimo, with a ritardando marking.

тем - же мир Тя сла - - - вит.  
 tʹém - zhe mʹir Tya slá - - - vʹit.  
 all the world doth praise Thee.

*mf*

*f*

*mf*

*p*

*pp*

Musical staff for Alto voice part, starting with a treble clef and a 4/2 time signature. The melody begins with a half note G4, followed by a quarter note A4, a dotted quarter note B4, and a half note C5. The dynamics range from mezzo-forte to pianissimo, with a ritardando marking.

тем - же мир Тя сла - - - вит.  
 tʹém - zhe mʹir Tya slá - - - vʹit.  
 all the world doth praise Thee.

*mf*

*f*

*mf*

*p*

*pp*

Musical staff for Tenor voice part, starting with a treble clef and a 4/2 time signature. The melody begins with a half note G4, followed by a quarter note A4, a dotted quarter note B4, and a half note C5. The dynamics range from mezzo-forte to pianissimo, with a ritardando marking.

тем - же мир Тя сла - - - вит.  
 tʹém - zhe mʹir Tya slá - - - vʹit.  
 all the world doth praise Thee.

*mf*

*f*

*mf*

[*p*]

*pp*

Musical staff for Bass voice part, starting with a bass clef and a 4/2 time signature. The melody begins with a half note G3, followed by a quarter note A3, a dotted quarter note B3, and a half note C4. The dynamics range from mezzo-forte to pianissimo, with a ritardando marking.

тем - же мир Тя сла - - - вит.  
 tʹém - zhe mʹir Tya slá - - - vʹit.  
 all the world doth praise Thee.

задерживая  
rit.

Musical staff for Piano accompaniment, showing both treble and bass clefs in a 4/2 time signature. The accompaniment consists of chords and moving lines in both hands, supporting the vocal parts.

Copyright Review Only