

Bach-Studien für Flöte solo

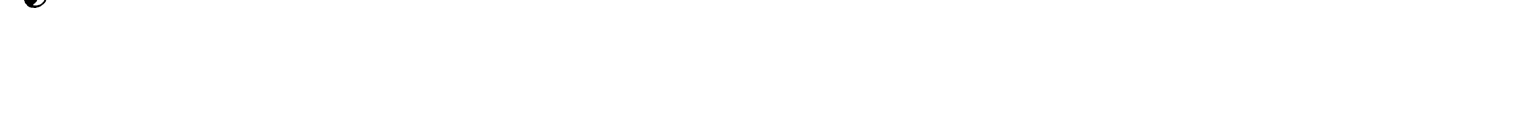
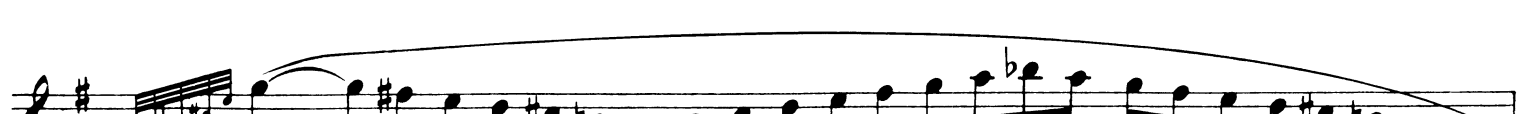
13 Präludium

BWV 850

Originaltonart D-dur

aus dem „Wohltemperierten Klavier“ 1. Teil

The image displays a musical score for a flute solo, BWV 850, Präludium. The score is written on ten staves, each beginning with a treble clef and a key signature of one sharp (F#), indicating the key of D major. The music is in common time (C). The notation consists of a single melodic line with various rhythmic values, including eighth and sixteenth notes, and rests. The piece is characterized by its intricate, flowing patterns and frequent use of accidentals, particularly sharps and naturals, which are essential for its technical and musical development. The score is presented in a clean, black-and-white format, typical of a printed musical score.



14 Double

Originaltonart h-moll

aus der Partita I für Violine solo BWV 1002

Presto

Leseprobe

Sample page

The image displays a musical score on ten staves, all in G major (one sharp). The notation includes various rhythmic values such as eighth and sixteenth notes, often beamed together. A central graphic features a silhouette of a person sitting and reading a book, enclosed in a circle. The text "Leseprobe" is overlaid on the fifth staff, and "Sample page" is overlaid on the eighth staff.

Leseprobe

Sample page