

# THE CHURCH MUSICIAN

## Contents

Introduction and Music Fundamentals . . . . .	4
Keyboard Music Alphabet . . . . .	5
Line and Space Notes, Steps, Time Signature, Musical Rhythm . . . . .	6
Middle C Position . . . . .	7
<i>I'VE GOT THE JOY, JOY, JOY.</i> . . . . .	7
Keyboard Reference Chart . . . . .	8
Dynamic Signs . . . . .	9
<i>JESUS LOVES ME</i> . . . . .	9
The Sharp Sign ( $\sharp$ ) . . . . .	10
<i>PRAISE HIM, PRAISE HIM</i> . . . . .	10
G Major Key Signature, $\frac{3}{4}$ Time Signature, Rest Signs ( $\text{Z}$ ), Ritardando. . . . .	12
<i>GOD THE CREATOR</i> . . . . .	12
The Flat Sign ( $\flat$ ), $\frac{2}{4}$ Time Signature, Phrase, Slur . . . . .	13
<i>SUNDAY SCHOOL IS OVER.</i> . . . . .	13
F Major Key Signature . . . . .	14
<i>MY CHURCH</i> . . . . .	14
Tie . . . . .	16
<i>PRELUDE</i> . . . . .	16
Octave Sign ( $\text{O}^{\text{va}}$ ), Damper Pedal . . . . .	17
<i>CHIMES</i> . . . . .	17
$\frac{4}{4}$ Time Signature . . . . .	18
<i>HOLY, HOLY, HOLY.</i> . . . . .	18
<i>INTERLUDE</i> . . . . .	19
<i>OFFERTORY.</i> . . . . .	20
<i>DOXOLOGY.</i> . . . . .	21
<i>I'LL BE A SUNBEAM</i> . . . . .	22
<i>CHURCH IS OVER</i> . . . . .	24
Staccato . . . . .	26
<i>POSTLUDE.</i> . . . . .	26
<i>JESUS SHALL REIGN</i> . . . . .	27
<i>CHRISTMAS: LITTLE DONKEY</i> . . . . .	28
<i>EASTER: JOYFUL, JOYFUL WE ADORE THEE</i> . . . . .	31
Certificate of Award . . . . .	32

# How to Prepare Your Piano Lessons

- Clap and sing the words.
- Clap and count aloud.
- See that your fingers are curved.
- Keep your feet flat on the floor.
- Relax your shoulders.
- Keep your arms level with the keyboard.
- Play SLOWLY and count ALOUD as you play.
- Use the correct fingering.
- Play and sing the words.

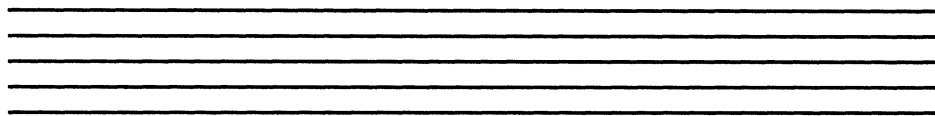
When your lesson is prepared using the steps above, place a check in the box beside the title of each piece.



## We Begin to Read

The STAFF has 5 lines and 4 spaces.

**STAFF**

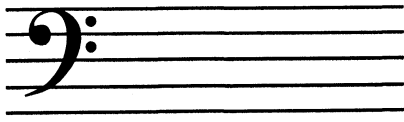


**GRAND STAFF**

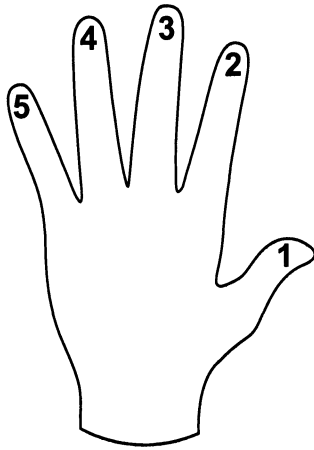
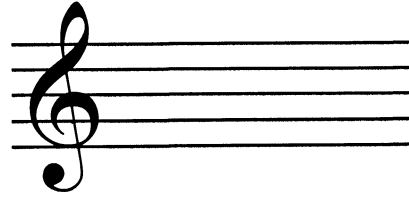
	BAR LINE	BAR LINE	BAR LINE	
	MEASURE	MEASURE	MEASURE	MEASURE

DOUBLE  
BAR LINE  
AT  
END  
OF  
PIECE.

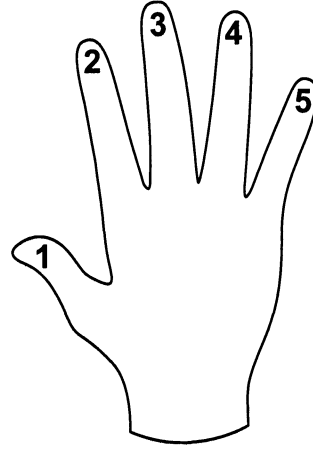
**BASS CLEF**  
or  
**F CLEF**



**TREBLE CLEF**  
or  
**G CLEF**



**LEFT HAND**

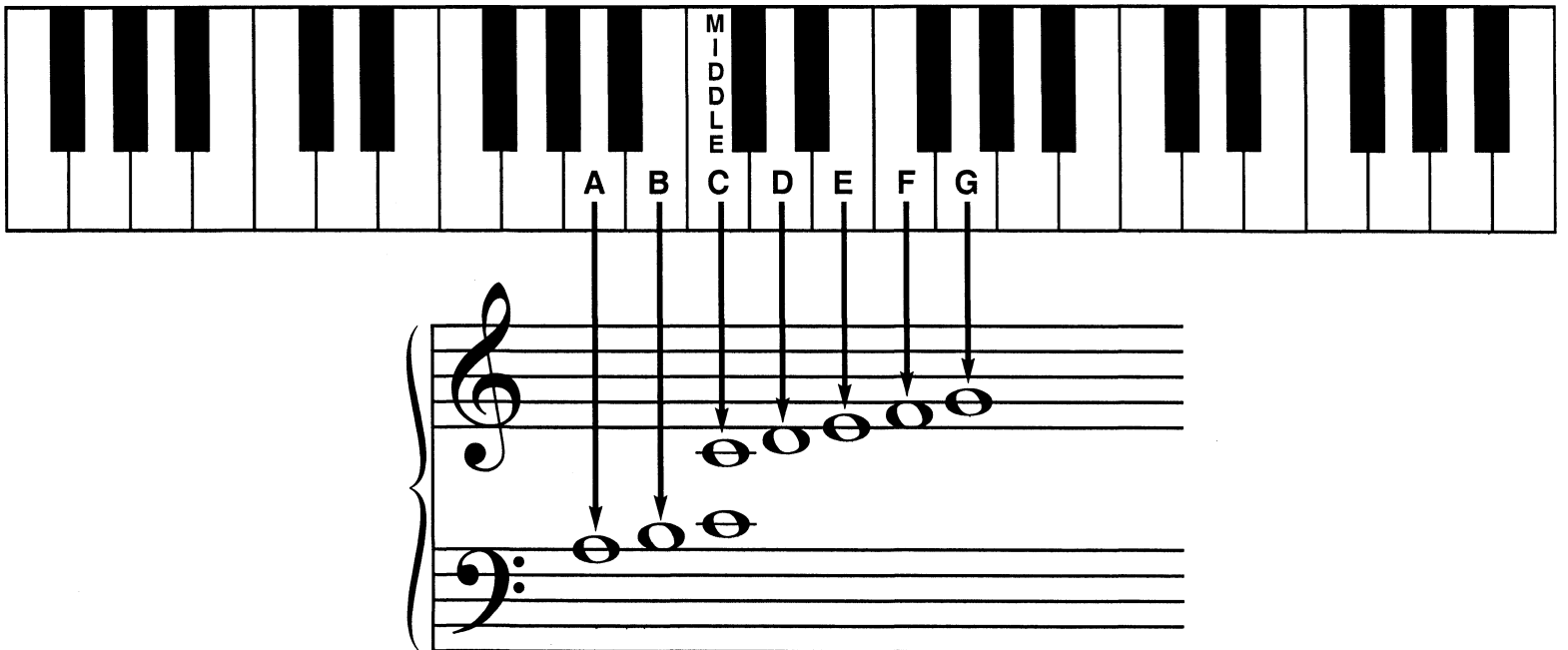


**RIGHT HAND**

## Keyboard Musical Alphabet

Notes are placed on the **GRAND STAFF** and tell us what keys to play.

Notes may be placed on lines  or in spaces .



You will notice above that the Middle C Note has two places on the **GRAND STAFF**. They are for the same key but are played with different hands.

**TREBLE CLEF** Middle C is played with the **RIGHT HAND**.

**BASS CLEF** Middle C is played with the **LEFT HAND**.